

FILM & TV

COPPERWOOD STUDIO

Copperwood Studio is a full-service facility in Richmond, BC with 106,000 square feet, 31 feet clear height, and 52 feet of column spacing. The space provides clients with three large, engineered sound stages, mill shop and paint shop, additional support space, along with ample circus and crew parking. All offices are equipped with fibre-optic services and are fully furnished, providing a modern and comfortable turn-key work environment.




12211 Horseshoe Way, Richmond, BC
[sunbeltrentals.com](https://www.sunbeltrentals.com)


[VIEW ON MAP](#)

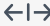
HIGHLIGHTS

- Production office with IP phones
- 10 GB fiber-optic service
- Full-service paint shop complete with paint spray booth
- Mill shop
- Wardrobe, set decoration, and props lockups


FEATURES

 80 parking spots

 31' high ceilings

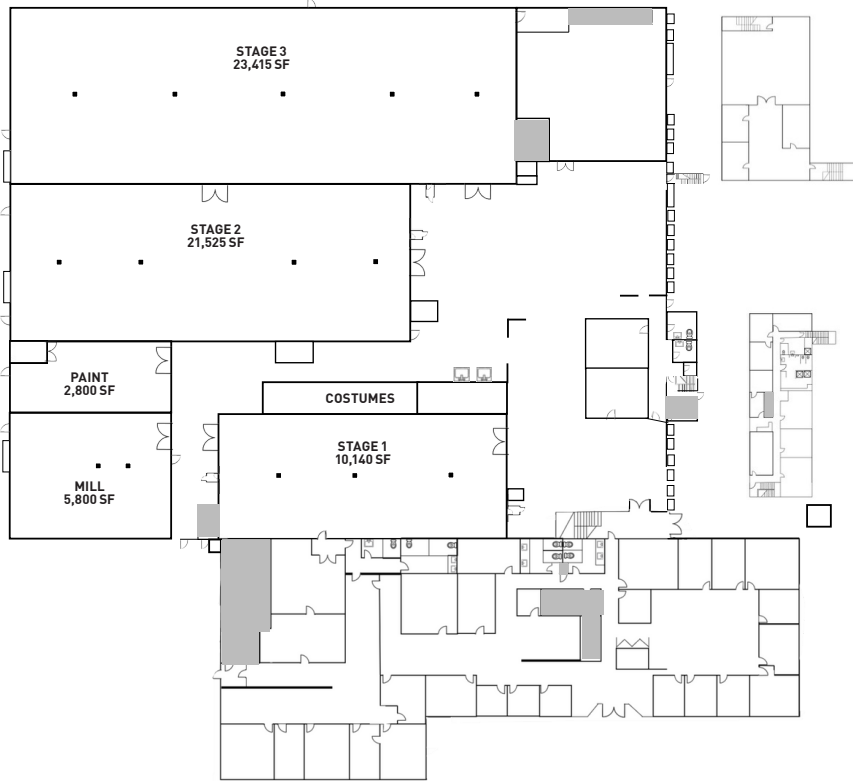
 52' column spacing

 2,000 amps

 Nearby:

- 14 mins from Ironwood Studio
- 15 mins from Fraserwood Studio
- 16 mins from Vancouver International Airport
- 35 mins from Downtown Vancouver
- 40 mins from Sunbelt Rentals Film & TV Office and Rental House

FLOOR PLAN



SPECIFICATIONS

Stage 1:	10,140 sq. ft.
Stage 2:	21,525 sq. ft.
Stage 3:	23,415 sq. ft.
Total Stage Space:	55,080 sq. ft.
Mill:	5,800 sq. ft.
Paint:	2,800 sq. ft.
Production Offices:	11,580 sq. ft.
Wardrobe:	3,977 sq. ft.
Props:	3,977 sq. ft.
Set Dec Lock-up:	3,977 sq. ft.
Total Support Space:	32,111 sq. ft.
Total Facility Space:	*106,000 sq. ft.

*Including common and facility areas



Our Studios, Your Production

Visit our website, email us, or call us to learn more about Copperwood Studio. Our seasoned professionals can deliver solutions that exceed your specifications.

sunbeltrentals.com | 800-667-9328

